

# MORRISON - Ranch -

1610 Templeton Road | Templeton, California 93465



Maps are for orientation purposes only.  
Not guaranteed for accuracy.

THE ENCLOSED INFORMATION HAS BEEN OBTAINED FROM SOURCES THAT WE DEEM RELIABLE; HOWEVER, IT IS NOT GUARANTEED BY CLARK COMPANY AND IS PRESENTED SUBJECT TO CORRECTIONS, ERRORS, PRIOR SALE, CHANGES OR WITHDRAWAL FROM THE MARKET WITHOUT NOTICE.



# MORRISON - Ranch -

1610 Templeton Road | Templeton, California 93465



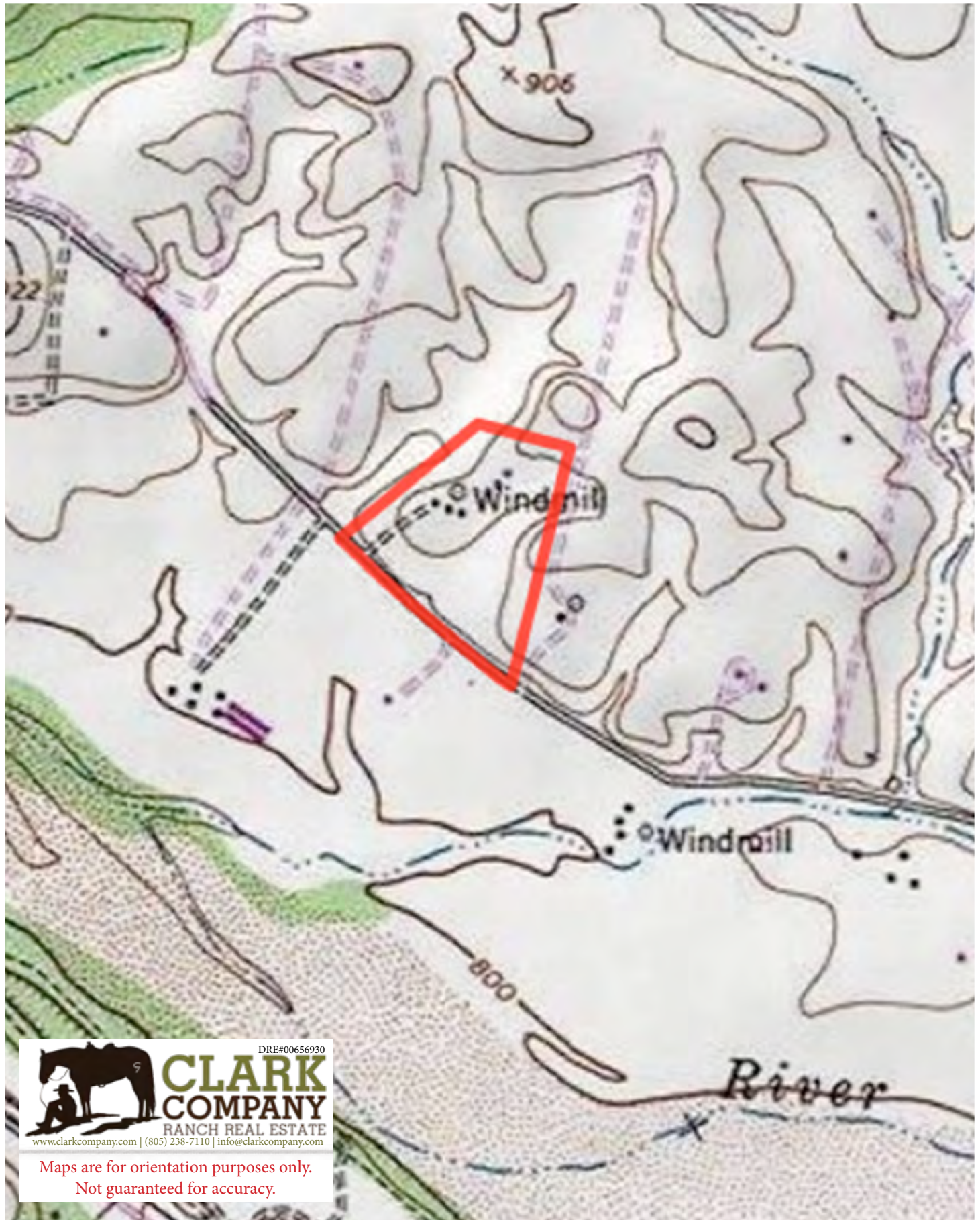
Maps are for orientation purposes only.  
Not guaranteed for accuracy.

THE ENCLOSED INFORMATION HAS BEEN OBTAINED FROM SOURCES THAT WE DEEM RELIABLE; HOWEVER, IT IS NOT GUARANTEED BY CLARK COMPANY AND IS PRESENTED SUBJECT TO CORRECTIONS, ERRORS, PRIOR SALE, CHANGES OR WITHDRAWAL FROM THE MARKET WITHOUT NOTICE.



# MORRISON - Ranch -

1610 Templeton Road | Templeton, California 93465



Maps are for orientation purposes only.  
Not guaranteed for accuracy.

THE ENCLOSED INFORMATION HAS BEEN OBTAINED FROM SOURCES THAT WE DEEM RELIABLE; HOWEVER, IT IS NOT GUARANTEED BY CLARK COMPANY AND IS PRESENTED SUBJECT TO CORRECTIONS, ERRORS, PRIOR SALE, CHANGES OR WITHDRAWAL FROM THE MARKET WITHOUT NOTICE.



# MORRISON - Ranch -

1610 Templeton Road | Templeton, California 93465



## Legend

- 160 Lockwood-Concepcion complex
- 103 Arbuckle -Positas complex
- 150 Hanford and Greenfield gravelly sandy loams

*More info on next page*



Maps are for orientation purposes only.  
Not guaranteed for accuracy.



SOIL REPORT

Symbol	Map Unit Description	Farmland Class	Area (AC)	Available Water Storage (0-150cm - Weighted Avg)	Flooding Frequency (Max)	Drainage Class (Dominant Condition)	Drainage Class (Wettest Component)	Hydric Classification	Water Table Depth (Annual Min)	Water Table Depth (April to June Min)	Bedrock Depth (Min)	Soil Order
103	Arbuckle -Positas complex, 15 to 30 percent slopes	Not prime farmland	11.27	19.2	None	Well drained	Well drained	0	0	0	0	Alfisols
160	Lockwood-Concepcion complex, 9 to 15 percent slopes	Not prime farmland	5.08	19.9	None	Well drained	Moderately well drained	0	0	0	0	Mollisols
150	Hanford and Greenfield gravelly sandy loams, 2 to 9 percent slopes	Prime farmland if irrigated	4.07	14.9	None	Well drained	Well drained	0	0	0	0	Entisols